

YOUR URBAN SANCTUARY IN A VIBRANT CITY

KUALA LUMPUR, MALAYSIA

PAVILION HOTEL

KUALA LUMPUR

MANAGED BY BANYAN TREE

BANYANTREE.COM

WELCOME TO PAVILION HOTEL KUALA LUMPUR

Welcome to Pavilion Hotel Kuala Lumpur Managed by Banyan Tree; an urban sanctuary in the heart of bustling Kuala Lumpur. Positioned above the award-winning Pavilion Kuala Lumpur and the Couture Precinct extension, with 325 exquisitely furnished rooms and suites are spread across 13 floors. Each rooms and suites provide discerning travellers with sophisticated respite from the hustle and bustle of the city. The hotel's unique location ensures that access to the most prestigious shopping destination in town is just an elevator ride away while the Kuala Lumpur International Airport is but a 45-minute journey by car.



Facilities

Banyan Tree Spa | Banyan Tree Retail Shop | Club Lounge | Rooftop Infinity Pool | Sky Gym

Restaurant and Bars

The Courtyard | Ebisu | Whisky Cove | In-Room Dining

Meetings and Events

Pavilion Ballroom | The Crescent | 5 Meeting Rooms

45-minutes away by car from the Kuala Lumpur International Airport

● Pavilion Hotel Kuala Lumpur ✕ Airport

ROOMS



City Oasis (32-38sqm)

All 115 of our City Oasis rooms come with a large picture window that lets in natural daylight and a charming city view. These serene rooms are decorated in an understated modern style and furnished with a functional desk with all the usual amenities for your convenience. A choice of the spacious king-sized bed or twin beds that are outfitted with goose feather bedding and Egyptian cotton linen for ultimate comfort.



City Oasis King



City Oasis Twin



Courtyard Oasis (38-43sqm)

Escape the hustle and bustle of the Kuala Lumpur Metropolis by soaking up the serenity of our Courtyard Oasis rooms. All 60 rooms are furnished with a charming courtyard view, an armchair with coffee table, a functional desk, a gorgeous king-sized bed or twin beds with goose feather bedding and Egyptian cotton linen and a modern bathroom equipped with rain shower and all the amenities for your comfort.



Courtyard Oasis King



Courtyard Oasis Twin



Grand Oasis (42-60sqm)

All 45 of our spacious Grand Oasis rooms offers the perfect sanctuary for the senses in the vibrant Bukit Bintang, with a choice of city or courtyard view, a comfortable armchair with coffee table, a functional desk, a rain shower and room amenities for your comfort. The gorgeous king-sized bed with Egyptian cotton linen and goose feather bedding ensures you a blissful night's sleep.

**Bathtub is only available in selected Grand Oasis rooms.*



Grand Oasis King



Grand Oasis Twin



Bathroom in Grand Oasis



Club City Oasis (32-38sqm)

All 60 elegant Club City Oasis rooms are tastefully furnished with a plush armchair, coffee table and a choice of a luxurious king-sized bed or spacious twin beds, you'll find everything you need to kick back and relax. Delight yourself with treats from the minibar or a cup of fresh coffee from the in-room capsule coffee maker. Clubroom guests also enjoy exclusive club privileges and Club Lounge access.



Club City Oasis King



Club City Oasis Twin



Twin Bedroom in Club City Oasis



Twin Bedroom in Courtyard Oasis



Club Grand Oasis (42-60sqm)

All 19 Club Grand Oasis rooms are outfitted with superb modern contemporary furnishings. Relax in a comfy armchair and enjoy the beautiful city or courtyard view with a cup of from the in-room capsule coffee maker or treats from the in-room minibar. Refresh yourself in the rain inspired shower and retire into a luxurious king-sized bed with goose feather bedding and Egyptian Cotton linen. Clubroom guests also enjoy exclusive club privileges and Club Lounge access.

**Bathtub is only available in selected Club Grand Oasis rooms.*



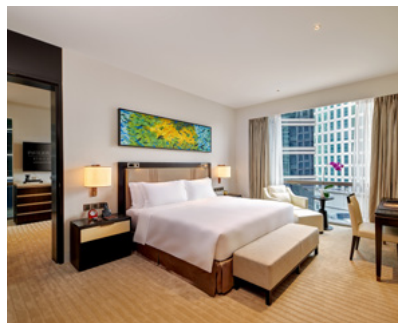
Bathroom in Urban Studio



Urban Studio (64-72sqm)

16 Urban Studios awaits discerning guests looking to take their stay to the next level. The room features natural daylight and a stunning view of KL city's night sky with the extravagant floor to ceiling windows. Designed to give a sense of peace and comfort, tastefully furnished with king-sized or twin beds, a business desk and seating area for all your needs. Rejuvenate in the elegant soaking tub infused with bath salts or bath foam after a long day. Studio room guests enjoy exclusive club privileges and Club Lounge access.



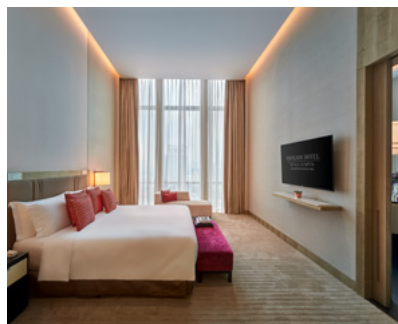


Urban Suite (72-76sqm)

All eight Urban Suites are designed to provide a sense of luxury and comfort of a home away from home. The elegant bedroom is separated from the spacious living and dining area, allowing guests privacy and space needed. The large floor to ceiling windows allows natural daylight and a magnificent view of either the city or courtyard. Wash away all weariness in the soaking tub and retire into the comfort of a king-sized bed with goose feather bedding and Egyptian cotton linens. Suite room guests enjoy exclusive club privileges and Club Lounge access.



Living Room in Urban Suite



Pavilion Suite (113sqm)

The Pavilion Suite is inspired to create a sense of elegance and comfort with natural daylight streaming through the floor to ceiling windows while showcasing the stunning view of Kuala Lumpur city. Indulge in the soaking bathtub infused with bath salts or bath foam in the suites' stunning marble bathroom. Wind down into the plush king-sized bed with goose feather bedding and Egyptian cotton linen or just kick back in the comfort of a spacious living or dining area. An additional connecting bedroom is available upon request. Suite room guests enjoy exclusive club privileges and Club Lounge access.

*Additional Connecting Bedroom



Bathroom in Pavilion Suite



Living Room in Presidential Suite



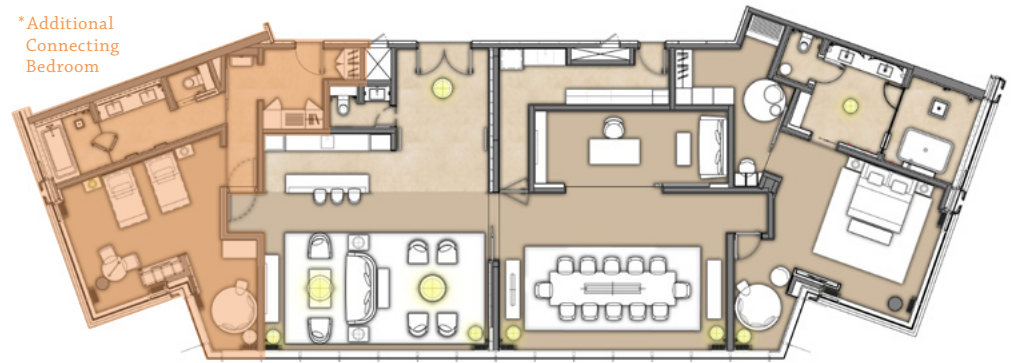
Dining Room in Presidential Suite



Presidential Suite (319sqm)

Pavilion Hotel Kuala Lumpur's Presidential Suite is the hotel's largest and most lavishly designed suite measuring 319 square metres. Be spoiled with our 24-hour Personal Resorts Host caring for all your needs without leaving the luxuries of your suite. Savour in the elegance of the contemporary a sophisticated bedroom to the spacious living and dining room and exquisite marble bathroom complete with soaking tub and twin-vanity counter. More space needed for family and friends; an additional connecting bedroom is available upon request. Suite room guests also enjoy full exclusive club privileges and Club Lounge access.

*Additional Connecting Bedroom



Bathroom in Presidential Suite

For reservations and enquiries, please contact

**Pavilion Hotel Kuala Lumpur
Managed by Banyan Tree**
170, Jalan Bukit Bintang
55100 Kuala Lumpur
Malaysia
Tel: +603 2117 2888
Fax: +603 2117 2999
pavilionhotel-kualalumpur
@banyantree.com

CORPORATE OFFICE

Banyan Tree Hotels & Resorts
Group Marketing Services
211 Upper Bukit Timah Road
Singapore 588182
Tel: +65 6849 5888
corporate@banyantree.com

WORLDWIDE SALES

ASIA PACIFIC

China - Beijing
Tel: +86 10 8515 1828
Fax: +86 10 8587 0308
sales-beijing@banyantree.com

China - Guangzhou
Tel: +86 20 2826 1896
Fax: +86 20 2826 1897
sales-guangzhou@banyantree.com

China - Shanghai
Tel: +86 139 1662 0627
sales-shanghai@banyantree.com

Hong Kong
Tel: +852 97186360
sales-hongkong@banyantree.com

Japan
Tel: +81 3 5542 3511
Fax: +81 3 5542 3512
sales-tokyo@banyantree.com

Taiwan
Tel: +886 2 2546 9833
Fax: +886 2 2546 9849
sales-taiwan@banyantree.com

EUROPE

Germany, Austria & Switzerland
Tel: +49 179 5181 180
sales-germany@banyantree.com

United Kingdom
Tel: +44 7941 287 072
sales-london@banyantree.com

WORLDWIDE RESERVATIONS TOLL-FREE NUMBERS

AMERICAS

United States
Tel: 180 0591 0439

Mexico
Tel: 00 188 8213 4992

Other Countries
Tel: +140 7284 4284

ASIA PACIFIC

Australia
Tel: 18 0005 0019

China
Tel: 400 921 9789

Hong Kong
Tel: 80 0903 881

Japan
Tel: 01 2077 8187

Singapore
Tel: 1800 232 5599

Other Countries
Tel: +65 6232 5505

EUROPE

Germany
Tel: 00 800 3002 0000

United Kingdom
Tel: 00 800 3002 0000

Other Countries
Tel: +49 69 6641 9608

MIDDLE EAST

United Arab Emirates
Tel: 800 065 0586