

# NOVOTEL



NOVOTEL

**NOVOTEL**  
Novotel Singapore on Kitchener  
Welcome.



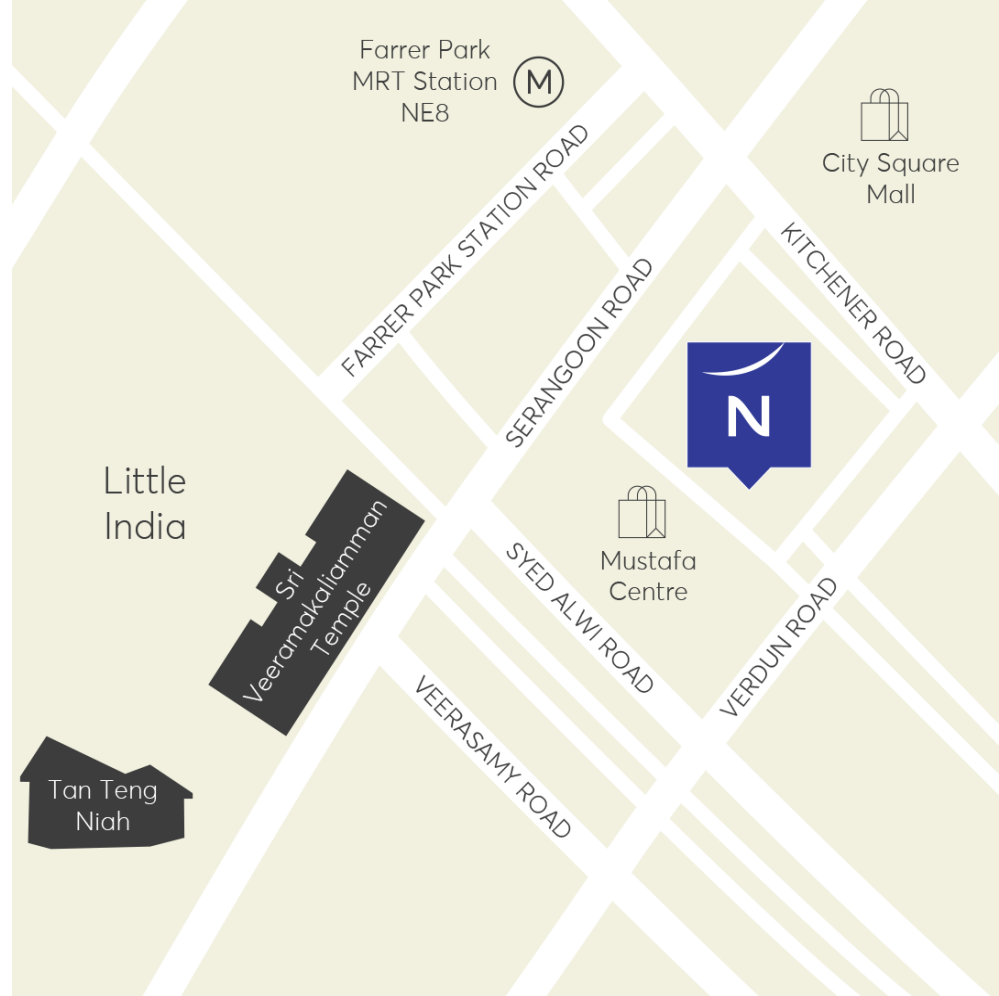
# Our Location

Experience urban tranquillity at Novotel Singapore on Kitchener, your haven in the heritage hub of Little India.

Just a 3-minute walk from Farrer Park MRT Station, our hotel is ideally situated, providing effortless access to Singapore's most prominent attractions, shopping hubs and business districts.

Wander along the neighbouring surroundings of Serangoon Road, Kitchener Road, Verdun Road and Syed Alwi Road where vibrant hues and alluring aromas enchant.

Indulge in retail therapy and culinary delights at City Square Mall, conveniently located opposite the hotel. Dive into late-night shopping at Mustafa Centre and immerse yourself in the vibrant shopping scene.



# About Us

Discover the perfect blend of convenience and cultural richness at Novotel Singapore on Kitchener, where every moment is an invitation to explore and indulge in the rich tapestry of our surroundings. Our devoted team is poised to lead you in embracing the local essence and ensuring an unforgettable stay.

Novotel believes the importance of leaving space for slow living, by inviting business travellers to clock out and rest up, and encouraging families to soak up quality time together.

Your Time, Your Way.



# Our Rooms & Suites

Discover the Novotel experience at one of Singapore's most family-friendly hotels located in Farrer Park and Little India.

Choose from our selection of 543 rooms and suites, each offering an expansive city view that adds a touch of urban charm to your stay.

Enjoy a restful night within your well-appointed room, meticulously designed to provide you with the perfect retreat.



# Superior Room

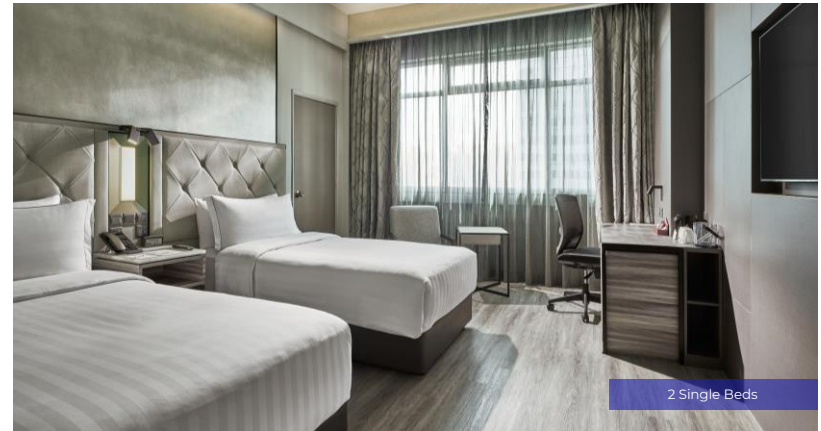


Your modern and spacious Superior Room with a city view is a quiet haven to relax after a fun-filled day of exploring the city or a fruitful business event. The 28 sqm room is a light-filled retreat with high ceilings and large windows and is available with 1 King Bed, 2 Single Beds, or a Corner Room with 1 King Bed.

The high-speed Internet Wi-Fi enables you to stay connected with your loved ones, and the executive desk with conveniently located USB charging points ensures that your devices are fully charged for the next day's activities. The ensuite bathroom with the rain shower feature helps you feel refreshed and unwind with the extensive in-room entertainment available on the 55-inch TV.

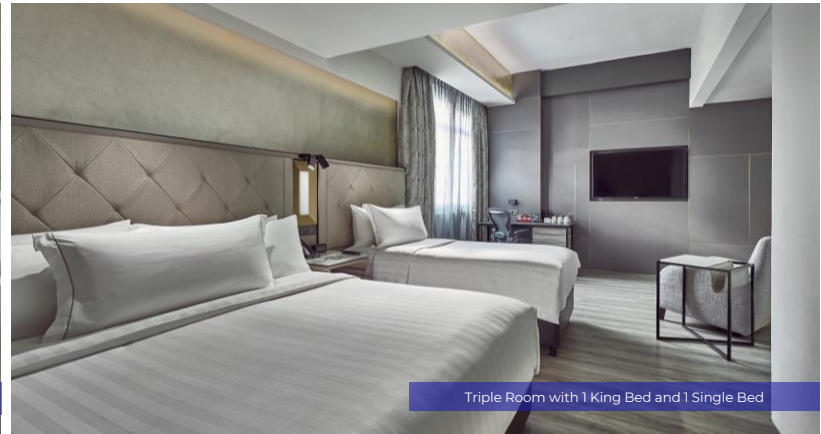
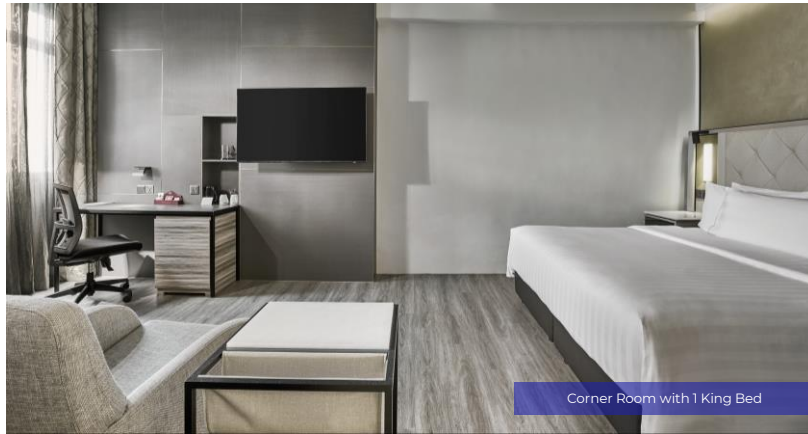
# Deluxe Room

Revitalise your senses in your stylish and expansive light-filled Deluxe Room offering a city view. After a day of sightseeing or a hectic day of business, recharge with a refreshing rain shower in the ensuite bathroom and chill out with a wide choice of in-room entertainment on the 55-inch TV. The ergonomic work desk with USB charging points, together with complimentary high-speed Internet Wi-Fi enables you to stay on top of work.



Offering a city view, your Deluxe Room is available in 28 sqm with a King Bed or 2 Single Beds, or a Corner Room with 1 King Bed.

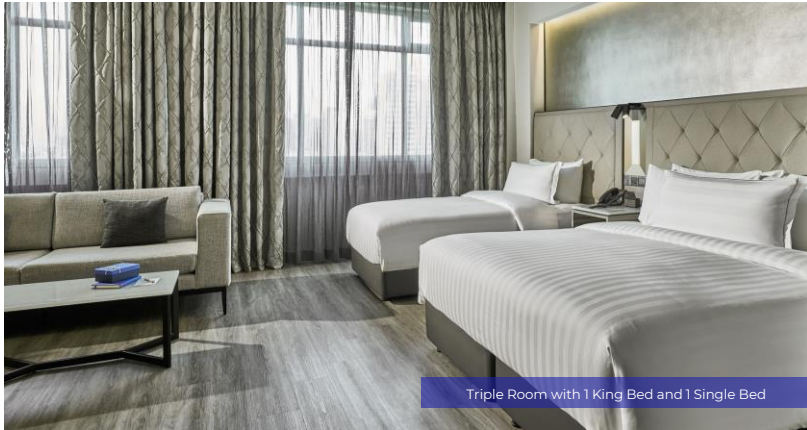
# Deluxe Room



If you are travelling with your family or companions, you can select the 33 sqm Deluxe Triple Room with 1 King Bed and 1 Single Bed for your stay.

# Family Room

Perfect for families or friends, the modern and spacious Family Room offers an ideal setting for a retreat after visiting attractions and shopping destinations in Singapore. You can revitalise yourself with a refreshing and rejuvenating rain shower experience, and enjoy complimentary high-speed Wi-Fi, which enables you to share fond memories of your stay here on social media.



The Family Triple Room with 1 King Bed and 1 Single Bed, and the Family Quadruple Room with 1 King Bed and 2 Single Beds, both featuring a spacious area of 48 sqm, come with an open plan living space for you to chill out and share your adventures of the day.

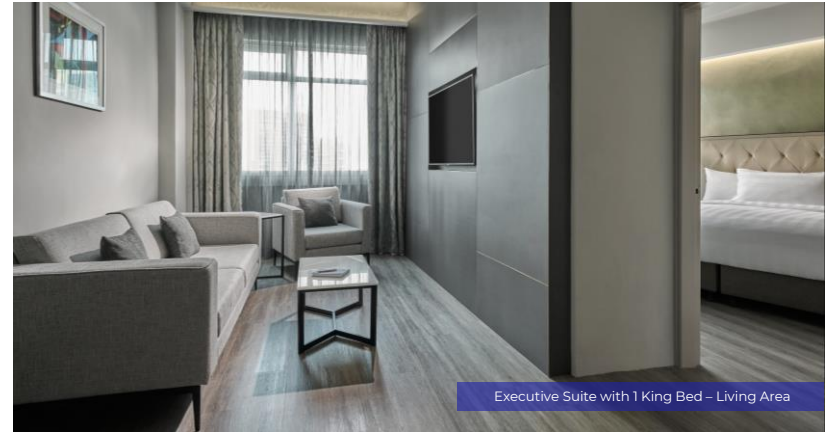
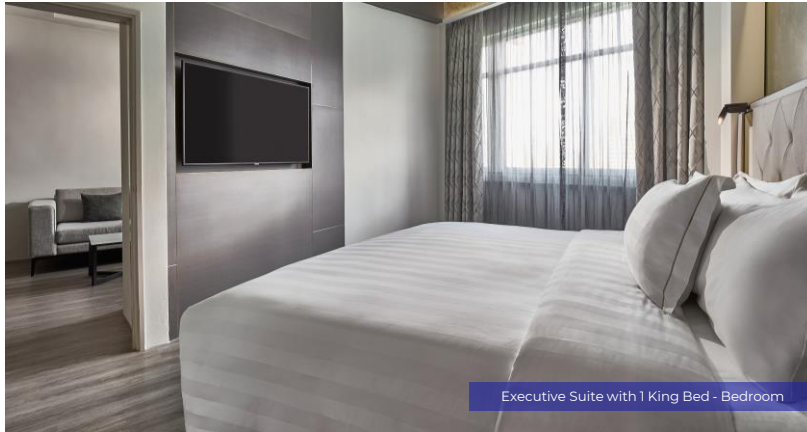
# Family Room



The expansive 86 sqm Premier Family Room features 1 King Bed with 4 Single Beds with a bathtub, walk-in wardrobe, dedicated lounge space and direct pool access.

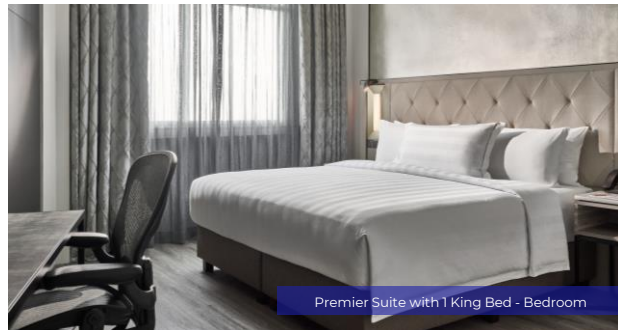
# Suites

Start your day with the panoramic city view from your spacious Suite. Enjoy complimentary high-speed Wi-Fi to stay connected with your loved ones and rejuvenate your senses with a revitalising rain shower experience.



Your spacious 48 sqm Executive Suite which comes with a King Bed is perfect for a business trip. The room features an ergonomic executive desk for your business needs after a day or meetings, or you may choose to unwind in the well-appointed bedroom.

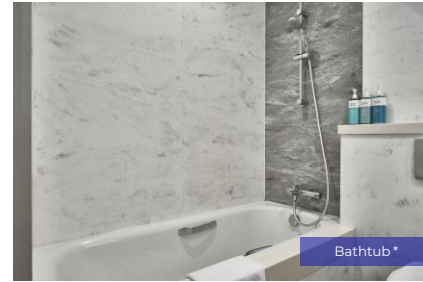
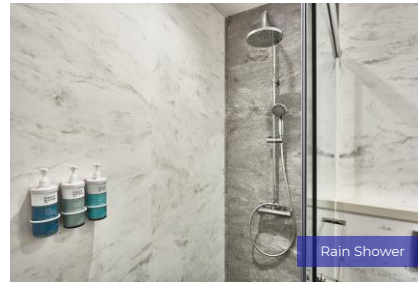
# Suites



With a separate living area for entertainment and a kitchenette to start or end your day, the expansive 76 sqm Premier Suite with a King Bed is ideal for a long stay in Singapore for business or holiday.

# Our Amenities

Our rooms and suites feature various contemporary amenities and a soothing ambience to accompany you for a restful night's sleep.



\* Nespresso Coffee Machine and Bathtub are available only in Family Rooms and Suites.

# Our All-Day Dining Restaurant - CALI

Located in the lobby of Novotel Singapore on Kitchener, immerse yourself in the bold, sophisticated flavours of the Southwest in a bright and airy setting.

The gastronomic journey is an affair to remember with CALI, the all-day dining restaurant serving up culinary wonders based on the traditions and styles of the Native American and Mexican heritage. The signature dishes include Spicy Jalapeno Tostada, Slow Cooked Beef Cheek, Chicken Tikka Pizza, and Lava Torte.

CALI's relaxed yet elegant ambience makes it a perfect place for lunchtime business meetings, gatherings of family and friends, or special nights out.



| <b>Buffet Breakfast</b>  | <b>Lunch</b>   | <b>Dinner</b>   |
|--------------------------|--|---|
| Daily (6:30AM - 10:30AM) | <b>À la carte:</b><br>Daily, 11:30AM to 10:30PM<br><br><b>Buffet Lunch:</b><br>12:00 to 2:30PM | <b>À la carte:</b><br>Daily, 11:30AM to 10:30PM<br><br><b>Buffet Dinner:</b><br>6:00PM to 10:30PM |

The restaurant is open on Public Holidays.

# Our Facilities

Enjoy a refreshing swim in our outdoor pool, spend a fun-filled day with your family in our kids' pool, or just laze around the pool on our lounge chairs or under the cabanas. If you prefer to start your day with a good workout, our 24-hour fitness centre is fully equipped with treadmills and weights to help you achieve an energising session. Come and make the most of your day with us.



# Meetings and Events

From business meetings to celebrations, Novotel Singapore on Kitchener offers a suite of newly renovated meeting and event rooms, thoughtfully designed with natural daylight and a dedicated foyer.

Fully equipped with modern audio-visual support, you can expect a hassle-free event experience.



# Meetings and Event Spaces



- The Emerald Ballroom 1 & 2 is fully equipped with modern audio-visual support and LCD projectors, thoughtfully designed with a dedicated foyer, making it the perfect venue for conferences, weddings, social luncheons or dinners and team building events.



- Designed in a stylish interior featuring floor-to-ceiling windows with natural daylight and three large projector screens, the Jade Room makes a perfect venue for an intimate celebration to a mid-scale corporate event.

# Meetings and Event Spaces



Designed with versatility in mind, the Sapphire Rooms are equipped with a projector screen, and a floor-to-ceiling window featuring natural daylight, ideal to facilitate your business meetings with your preferred setting.

# Seating Capacity

| Function Room          | Area (sqm) | Theatre | U-Shape | Boardroom | Classroom | Cluster | Banquet |
|------------------------|------------|---------|---------|-----------|-----------|---------|---------|
| Emerald Ballroom 1     | 256        | 220     | 30      | 24        | 90        | 60      | 180     |
| Emerald Ballroom 2     | 320        | 240     | 30      | 24        | 90        | 80      | 180     |
| Emerald Ballroom 1 & 2 | 576        | 460     | -       | -         | 182       | 120     | 360     |
| Jade Room              | 242        | 135     | 30      | 24        | 50        | 50      | 100     |
| Sapphire 1             | 49         | 30      | 15      | 12        | 18        | 15      | 30      |
| Sapphire 2             | 82         | 50      | 20      | 12        | 36        | 25      | 40      |
| Sapphire 3             | 54         | 30      | 15      | 12        | 18        | 15      | 30      |
| Sapphire 4             | 68         | 50      | 24      | 18        | 36        | 25      | 40      |
| Sapphire 1 & 2         | 131        | 80      | -       | -         | 54        | 40      | 70      |
| Sapphire 2 & 3         | 136        | 80      | -       | -         | 54        | 40      | 70      |
| Sapphire 1, 2 & 3      | 185        | 110     | -       | -         | 72        | 55      | 100     |

NO  
VO  
TEL

**Thank You**

**Novotel Singapore on Kitchener**

181 Kitchener Road, Singapore 208533

HC269@accor.com

T. +65 6428 3000



**NovotelSingaporeKitchener**



**novotelsgkitchener**