



boutique urban resort

www.hotelmaya.com.my

Take a step from the city, into resort serenity. In the heart of city's business and commercial districts, our neighbours include the iconic Petronas Twin Towers with the city's premier shopping centre, Suria KLCC & Avenue K. Hotel Maya is Kuala Lumpur's boutique urban resort offering comfort and convenience with distinct personality. Experience a unique & wholesome retreat with well furnished suites, trendy dining outlets, in-house spa & fitness centre, hydrotherapy pool & other amenities.

205 spacious rooms including 105 suites feature rustic timber flooring, contemporary furnishing and floor-to-ceiling glass panel overlooking the breathtaking view of Kuala Lumpur skyline.

Benefits and Privileges

- Complimentary early check in from 7.00 am with prior confirmation & subject to availability
- Internet Access
- Rates are inclusive of international buffet breakfast at Maya Brasserie
- Complimentary scheduled shuttle services to Bintang Walk
- Complimentary covered car park
- Usage of the heated hydrotherapy pool, gymnasium and fitness class
- Valet service *
- Tour counter *
- 24-hours doctor on call *
- 24-hours in-room dining *
- 24-hours reservation service

In-Room Amenities

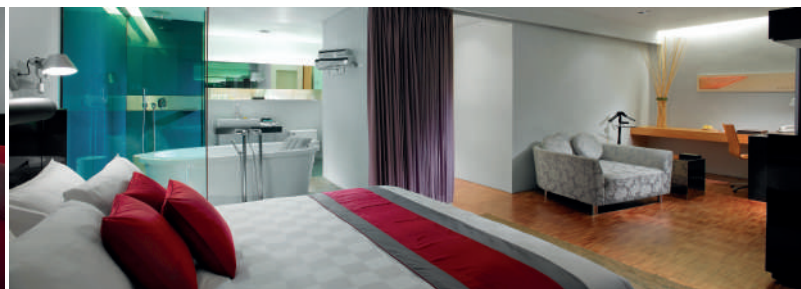
- IDD telephone and voicemail
- Sleek CBTL Coffee-machine with coffee capsule & tea
- LCD TV with satellite channels
- DVD player
- Secure key card access
- Digital safe box
- Connecting rooms
- Iron & ironing board
- Complimentary local newspaper
- Toiletries with essential oil
- Bathrobe, slippers & hairdryer
- Complimentary bottled water
- Mini bar *

* Features marked with asterisk(*) may be chargeable

Room Type	Units	Size (sq.m)	Size (sq.ft)
Studio	• 100	• 34	• 366
Junior Suite	• 19	• 45	• 484
Deluxe Suite	• 82	• 67	• 721
Executive Suite	• 2	• 100	• 1,076
Executive Apartment	• 2	• 101-146	• 1,087-1,572
Total Room	• 205		



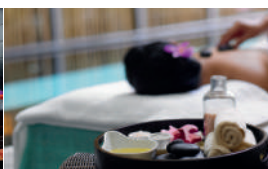
• studio room



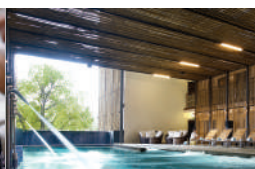
• junior suite



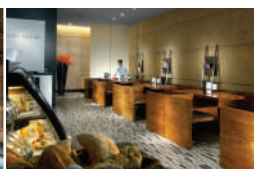
• lobby lounge



• anggun spa



• hydrotherapy pool



• ramah tamah



• maya brasserie



• still waters



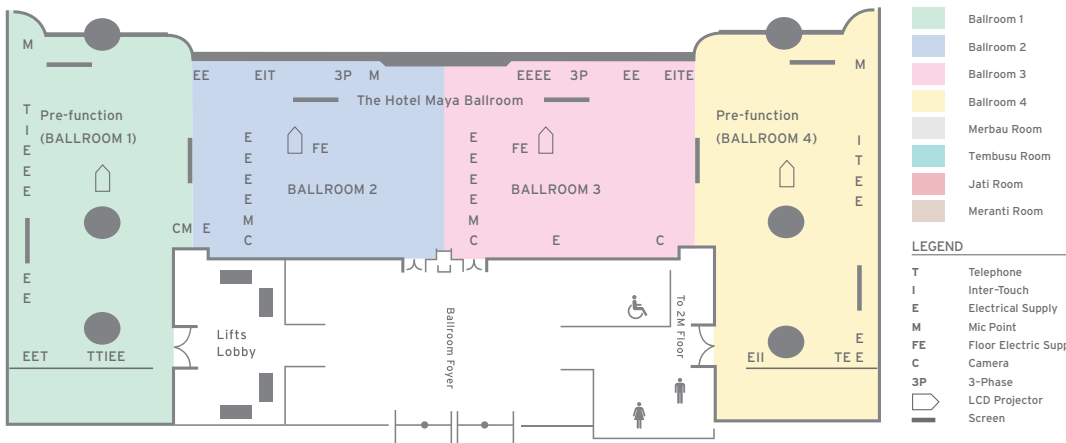
• ballroom



• sky lounge

ROOM CAPACITY & SPECIFICATIONS

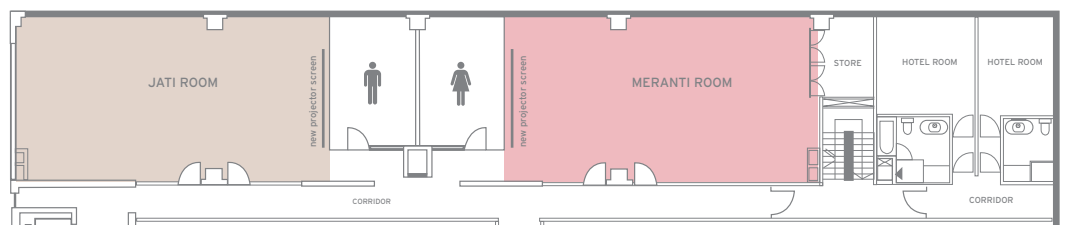
	Theater	Classroom	U-Shape	Cocktail	Banquet	Boardroom	Hollow Square	Location (level)	Area (L x W)	Dimensions	Ceiling
Ballroom	280	180	60	400	300	60	45	2	405 sq.m	36 x 9m	7m
Ballroom 2	130	60	20	100	80	24	24	2	132 sq.m	18 x 9m	7m
Ballroom 3	130	60	25	100	80	24	24	2	132 sq.m	18 x 9m	7m
Jati	60	40	30	50	70	25	25	3A	128 sq.m	14.5 x 7m	2m
Meranti	60	40	30	50	70	25	25	3A	128 sq.m	14.5 x 7m	2m
Merbau	40	30	22	60	100	18	24	2M	39 sq.m	8 x 7m	3.2m
Tembusu	40	30	22	60	100	18	24	2M	39 sq.m	8 x 7m	3.2m



FLOOR PLAN BALLROOM LEVEL 2



FLOOR PLAN BALLROOM LEVEL 2M



FLOOR PLAN BALLROOM LEVEL 3A

Banquet and Meeting Room Features & Services

- Capacity for meetings and functions of up to 300 persons
- Ballroom sub-dividable into 4 separate function areas
- 4 executive style meeting rooms
- 12-seat Executive Boardroom with video-conferencing facilities
- Packages for meetings, video conferencing and dinners
- Themed parties available
- Caters for product launches, seminars, company dinners and weddings
- Meeting rooms adjoined to private coffee break area
- Free-flow of freshly brewed coffee and selection of fine teas
- Outside catering facilities

Facilities

- Concierge
- Limousine service
- Covered carpark
- Anggun Spa
- Heated hydrotherapy pool
- Gymnasium
- Scheduled Fitness Classes
- Business Centre
- Florist

Dining and Entertainment

- Maya Brasserie - main dining outlet
- Still Waters - japanese & cantonese cuisine
- Ramah Tamah - pastry house
- Lobby Lounge
- Sky Lounge

boutique urban resort

hotel maya

KUALA LUMPUR

138 jalan ampang, 50450 kuala lumpur, malaysia
 t +603 2711 8866 f +603 2711 9966
 reservation fax +603 2711 2277
 info@hotelmaya.com.my www.hotelmaya.com.my

Hotel Maya Kuala Lumpur
 3.158589, 101.708031
 WORLDHOTELS DISTINCTIVE
 hotelmayakualalumpur Hotel Maya Kuala Lumpur

