



BANYAN TREE
KUALA LUMPUR

YOUR SANCTUARY



IN THE CITY

WELCOME TO BANYAN TREE KUALA LUMPUR

Welcome to Banyan Tree Kuala Lumpur, a sanctuary for the senses in Malaysia's dynamic tropical city. The hotel stands statuesque from levels 53 to 60 among the city's skyscrapers and offers breathtaking views of the city from the exquisitely designed rooms and suites. Banyan Tree Kuala Lumpur is a step away from the city's business, entertainment and premier shopping destinations.

55

Rooms +
Suites

3

Event
Spaces

6

Restaurants
+ Bars

GARDEN

CITY

OF LIGHTS

Facilities

- Banyan Tree Spa
- Gym
- Open-Air Pool & Jet Pool
- Restaurants and Bars
- Boardroom and Event Spaces



45-minutes by car from KLIA
20-minute drive from Kuala Lumpur Sentral
5-minute walk to Bukit Bintang MRT Station

● Banyan Tree Kuala Lumpur

✈ Airport

Rooms



Banyan Retreat Twin

Banyan Retreat

51 – 63 SQM

Modern interiors, a comfortable king-size bed, window walls with panoramic views of the city skyline, a cosy sofa and an oval soaking tub by the window let you relax the Banyan Retreat way.

Capacity: 2 | Beds: King / Twin | View: City Skyline



Banyan Retreat King



Banyan Retreat Twin



Signature Banyan Retreat King

Signature Banyan Retreat

63 – 67 SQM

A beautiful room with modern interiors, a comfortable king-size bed, and a sleek bathroom with an oval soaking tub by the window wall overlooking a stunning city view.

Capacity: 2 | Beds: King / Twin | View: City Skyline



Signature Banyan Retreat King



Signature Banyan Retreat Twin



Signature Sky Retreat King

Signature Sky Retreat

54 – 67 SQM

Views of the iconic Kuala Lumpur Tower, a modern bedroom with a gorgeous king-size bed, a bathroom with a deep oval soaking tub, a chromotherapy shower, a beautiful walk-in closet, and a TOTO intelligent toilet welcome you to this large tower view room.

Capacity: 2 | Beds: King / Twin | View: Kuala Lumpur Tower



Rooms



Sky Suite King

Sky Suite

62 SQM

The view of the iconic Petronas Twin Towers gives you a warm welcome to this luxury suite. With a deep oval soaking tub in a beautiful bathroom, modern furnishings, an elegant sofa, window walls and a king-size bed.

Capacity: 2 | Beds: King | View: Petronas Twin Towers & KL Tower



Type A



Type B



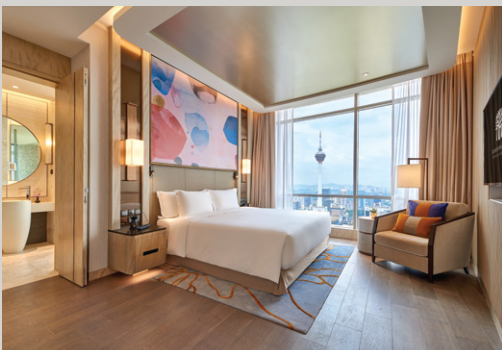
Sanctuary Suite King

Sanctuary Suite

90 SQM

View the Petronas Twin Towers and the stunning city skyline through the window walls, a generously spaced living area, a private relaxation pool and an elegant bedroom create a relaxing suite experience.

Capacity: 2 | Beds: King | View: Petronas Twin Towers



Sky Sanctuary Suite King

Sky Sanctuary Suite

90 SQM

Take in the breathtaking view of the horizon as far as the eye can see and an uninterrupted view of the Petronas Twin Towers. The suite includes a spacious living area, a comfortable bedroom with a king-size bed, a luxury bathroom with a chromotherapy shower, a sauna, a jet pool and a walk-in closet to bring you the finer things in life.

Capacity: 2 | Beds: King | View: Petronas Twin Towers & KL Tower



Rooms



Banyan Tree Suite King

Banyan Tree Suite

313 SQM

A split-level duplex with unrivalled panoramic views of Petronas Twin Towers and the city, double-height windows and luxurious carpeted and wooden floors welcome you to our luxury hotel in Kuala Lumpur. With a grand living space, an elegant dining room, one beautiful bedroom and a modern bathroom, you'll have the ultimate suite experience.

Capacity: 2 | Beds: King | View: Petronas Twin Towers



Lower Floor



Upper Floor



Signature Wellbeing Retreat King

Signature Wellbeing Retreat

63 SQM

Embark on a journey to uncover deeper self-knowledge, through carefully curated experiences with a wellbeing component.

Capacity: 2 | Beds: King | View: City Skyline



Meditation

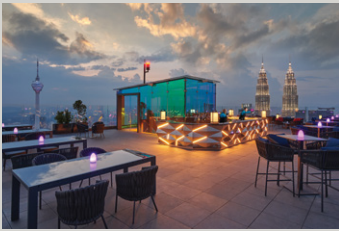


Daily Rest Ritual

IGNITE

YOUR SENSES

VERTIGO TOO



Situated on level 60 of Banyan Tree Kuala Lumpur, Vertigo TOO features a glorious 360° view of the city skyline, making it the perfect rooftop venue to pop bottles, chill and celebrate memorable events.

VERTIGO



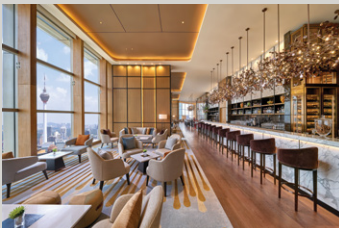
A stylish bar experience on level 59. Take in night of stunning views of Kuala Lumpur from above while enjoying signature cocktails from our mixologists and smooth beats by the resident DJ.

HORIZON GRILL



Nestled on level 58, Horizon Grill boasts a Gatsby-Esque indoor ambience and a rooftop terrace with stunning city views. Famed for its Santa Maria Grilled gourmet Steaks and Live Seafood.

ALTITUDE



Revel in an opulence and comfort on level 53, while savouring a delectable Afternoon Tea set paired with premium tea, coffee or wines.

EBISU AT ALTITUDE



Savour authentic dishes using Japanese gourmet produce, in an elegant ambience and charming views through large window walls from level 53.

BAKE BY BANYAN TREE




Indulge in Bake's decadent collection of patisserie, from bespoke cakes and pastries to skillfully crafted pralines and artisan breads, every bite is a delight.



GREEN IMPERATIVE FUND

Our Green Imperative Fund (GIF) support environmental action and community-based initiatives in countries where Banyan Tree Group operates. Join our efforts by contributing USD2 per room per night, as we match every donation dollar for dollar.

We appreciate your support in our continued commitment to “Embrace the Environment and Empower People”.



ROOTED IN SUSTAINABILITY

For the past 30 years, Banyan Tree has focused on offering clean natural based toiletries in all our guest rooms.

Our blends average 95% in natural origins, and are completely free of Parabens, Sodium Lauryl Sulfate (SLS), Sodium Laureth Sulfate (SLES), and are not tested on animals. We removed other synthetic ingredients such as colouring agents and unnecessary fragrances, replacing Ammonium Lauryl Sulfate (ALS) with plant or palm-derived combinations.



Living Room in Banyan Tree Suite



Bathroom in Sky Sanctuary Suite

BANYAN TREE KUALA LUMPUR
2, Jalan Conlay, 50450 Kuala Lumpur, Malaysia
Tel: +60 (3) 2113 1888 Fax: +60 (3) 2113 1999
Email: kualalumpur@banyantree.com